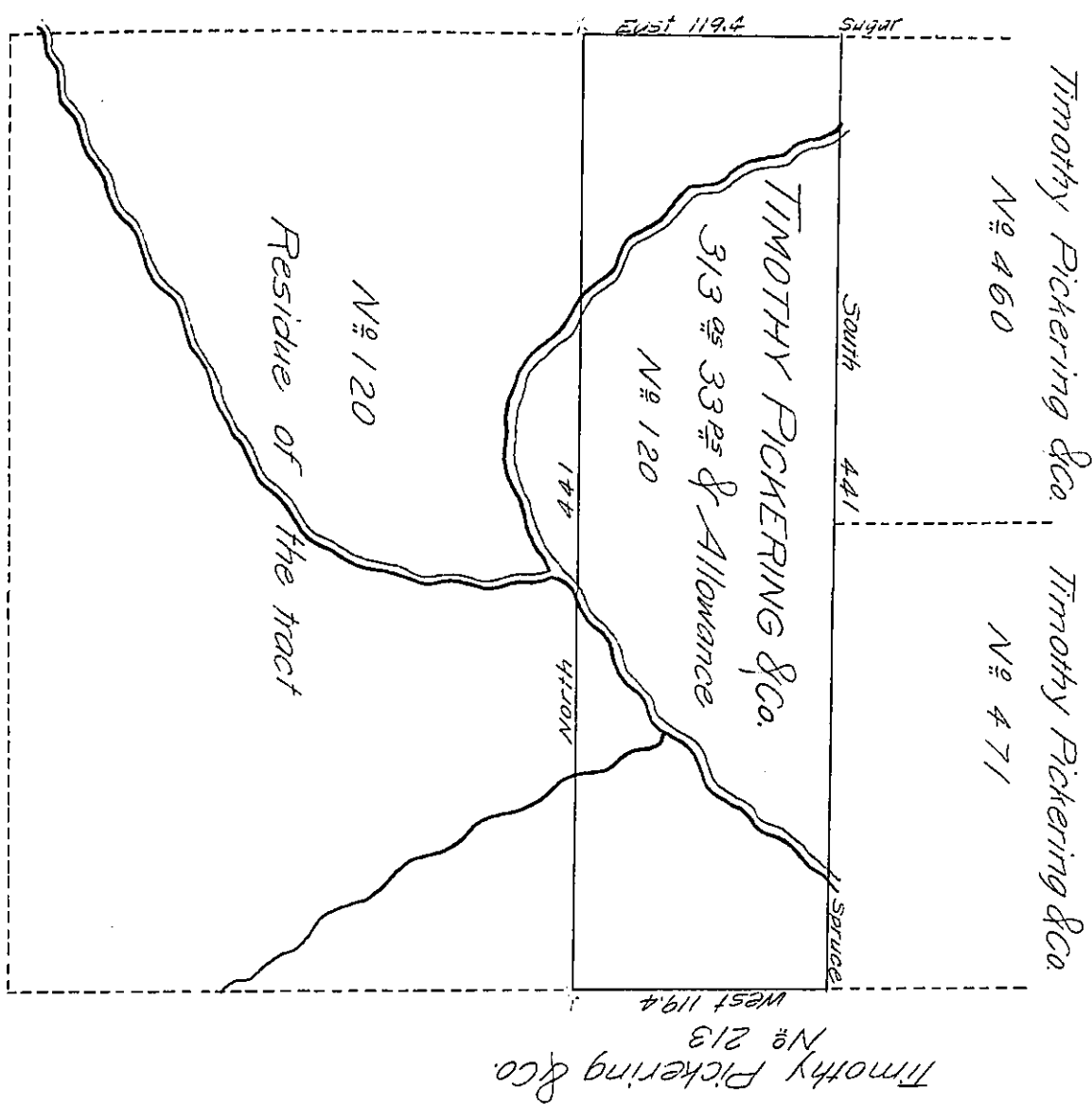


Timothy Pickering & Co.
No 201



The above described tract of three hundred and thirteen acres and thirty three perches and Allowance Situate in ~~Pine Creek~~^{Youngs} Township Jefferson County is part of a larger tract of 1001 acres and 15 perches and Allowance Originally Surveyed the 11th of August 1785 in pursuance of a warrant granted to Timothy Pickering Samuel Hodgdon Duncan Ingraham and Tench Coxe the 17th of May 1785

IN TESTIMONY that the above is a copy of the original remaining on file in the Department of Internal Affairs of Pennsylvania, made conformably to an Act of Assembly approved the 16th day of February, 1833, I have hereunto set my Hand and caused the Seal of said Department to be affixed at Harrisburg, this twenty ninth day of May 1906

Lucas R. Brown
Secretary of Internal Affairs.